



Dongfeng Diesel Dump Truck Two Wheel Drive Rear Drive 4×2 Manual Transmission 8 Square Meters

Our Product Introduction

Basic Information

- Place of Origin: China
- Brand Name: Fushunt
- Model Number: Dongfeng dump truck truck diesel two-wheel drive rear drive 4×2 manual transmission 8 square meters
- Minimum Order Quantity: 1 vehicle
- Price: \$30,000-\$40,000Dollar
- Packaging Details: Complete vehicle
- Delivery Time: 5-8 work days
- Payment Terms: T/T
- Supply Ability: 1000 vehicle

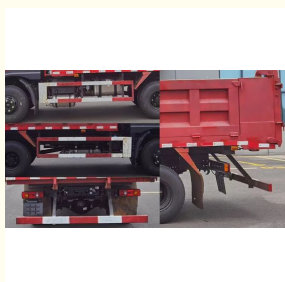


Product Specification

- Axle Configuration: 4X2
- Body Type: MPV
- Braking System: Air Brake
- Cab Type: High Roof
- Cabin Type: Globetrotter XL
- Comfort Features: Air Conditioning, Adjustable Steering Wheel, Heated Seats
- Fuel Type: Gasoline
- Horsepower: 750 Hp
- Model: FH16
- Safety: High
- Steering System: Power Steering
- Steering Type: Power Or Manual
- Tires: Heavy-duty
- Transmission: I-Shift



More Images



Product Description

Dongfeng dump truck truck diesel two-wheel drive rear drive 4x2 manual transmission 8 square meters

Paragraph 1: Function and Purpose

A self-unloading cargo transport truck is designed specifically for the transportation and unloading of goods. It features an automated unloading capability that allows for quick and efficient removal of cargo from the vehicle. This type of truck is commonly used in construction sites, mines, ports, and other locations that require frequent unloading of goods.

Paragraph 2: Body and Structure

A self-unloading cargo transport truck typically has a sturdy body and chassis structure to withstand the load and facilitate the unloading process. It is equipped with a tilting cargo bed that can be hydraulically tilted to one side, enabling automatic unloading of the cargo from the rear. The capacity and dimensions of the cargo bed can be adjusted according to specific requirements.

Paragraph 3: Unloading System and Operation

The unloading system of a self-unloading cargo transport truck consists of hydraulic mechanisms and control devices. By manipulating the control devices, the driver can control the tilting and unloading process of the cargo bed. These systems often feature user-friendly control interfaces that allow for easy operation and control of the unloading process.

Paragraph 4: Powertrain System and Performance

A self-unloading cargo transport truck is typically equipped with a powerful powertrain system to ensure sufficient power and torque during the unloading process. It commonly employs a diesel engine known for its high torque output and fuel efficiency. The performance and configuration of the powertrain system can be tailored to specific needs, accommodating different working environments and load requirements.

Paragraph 5: Safety and Convenience Features

Self-unloading cargo transport trucks are often equipped with various safety and convenience features, such as anti-lock braking systems (ABS), reverse sensors, and side blind-spot monitoring. These features contribute to enhanced driving safety, operational convenience, and reduced risks of accidents and injuries.

Summary: A self-unloading cargo transport truck is a specialized vehicle with an automated unloading capability. It features a robust body structure and a tilting cargo bed that allows for quick and convenient unloading of goods. Equipped with a powerful powertrain system and various safety and convenience features, this truck is suitable for transporting and unloading goods in various environments, enhancing work efficiency and operational convenience.

Vehicle technical parameters		
1	Car body dimensions (length × width × height) mm:	6300×2350×2850
2	Cargo compartment dimensions (length × width × height) mm:	4200×2300×800
3	Wheelbase mm:	3600
4	Vehicle fully loaded total mass kg:	11200
5	Vehicle curb weight kg:	5550
6	suspension system	Front suspension leaf spring suspension,
7	Approach / departure angle	Rear suspension leaf spring suspension
8	Number of axes	17/9
9	Fuel consumption	2
10	Number of spring leaves	15.7
11	Number of tires	10+8
12	Front and rear axle load (kg)	6
13	Steering Type	4000/7200
14	Minimum ground clearance mm:	steering wheel
15	Fuel type:	300
16	Fuel tank volume (L):	diesel fuel
17	engine model	150
18	Way of working:	20TD
19	Exhaust volume ml:	L in-line, four-cylinder, direct injection, 16 valves
20	Rated power kw(hp)/rpm:	2970
21	Maximum torque Nm/rpm:	125
22	Emission Standards:	380/3500-4500
23	Drive mode	National VI
24	transmission:	Front-wheel drive
25	Top speed km/h:	5 speed manual transmission
26	Tire specifications and models	100
27	Braking System	8.25R16LT 18PR

28	Environmental protection standards	front drum, rear drum
29	Rated passenger capacity (including driver)	GB17691-2005 (National VI)
Main vehicle configuration		
30	All-metal enclosed non-load-bearing body,	
31	ABS/EBD/EBC,	
32	hand mirror	
33	High and low beam headlights,	
34	Multi-directional driver's seat adjustment	
35	Manual air conditioner	
36	central locking	
37	cloth seat	
38	The whole car is made of steel wheels,	
39	Electric doors and windows	





Sichuan Fushunte Automobile Co., Ltd.



+8613568891631



609965408@qq.com



vehicle-automobile.com

No. 15, Wuxing 4th Road, Wuhou District, Chengdu City